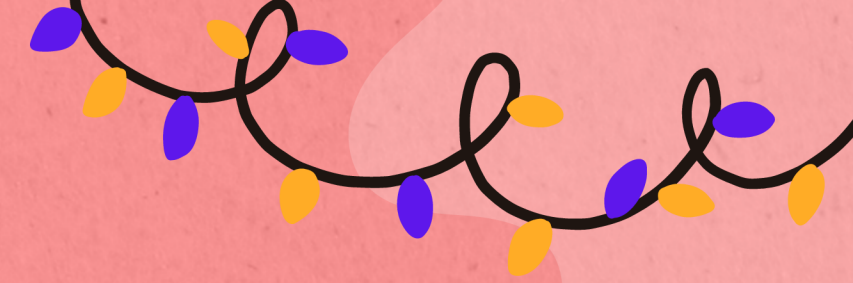




October  
2025



Preschool Snack Menu



Sun	Mon	Tue	Wed	Thu	Fri	Sat
			1 AM: Cereal, fruit and milk  PM: Ritz Cracker, string cheese, fruit and milk	2 AM: Animal Crackers, fruit and milk  PM: Cereal, fruit and milk	3 AM: Yogurt, fruit and milk  PM: Teddy Graham, fruit and milk	4 
5 	6 AM: Waffles, fruit and milk  PM: Cheez it, fruit and milk	7 AM: Animal crackers, fruit and milk  PM: Graham crackers/cream cheese, fruit and milk	8 AM: French toast, fruit and milk  PM: Goldfish, fruit and milk	9 AM: Cereal, fruit and milk  PM: Ritz crackers and slice cheese, fruit and milk	10 AM: Sting cheese, fruit and milk  PM: Cream cheese roll up, fruit and milk	11 
12 	13 Closed for PDD 	14 AM: Quesadilla, fruit and milk  PM: Yogurt, fruit and milk	15 AM: Sting cheese, fruit and milk  PM: Cream cheese roll up, fruit and milk	16 AM: Waffles, fruit and milk  PM: Yogurt, fruit and milk	17 AM: Goldfish, fruit and milk  PM: Animal crackers, and milk	18 
19	20 AM: Pancakes, fruit and milk  PM: Graham crackers and cream cheese, fruit and milk	21 AM: Waffles, fruit and milk  PM: Yogurt, fruit and milk	22 AM: French toast, fruit and milk PM: Teddy Grams, fruit and milk	23 AM: Ritz crackers, fruit and milk  PM: Cereal, fruit and milk	24 AM: Cereal, fruit and milk  PM: Ritz Cracker, string cheese, fruit and milk	25
26	27 AM: Nilla Wafers, fruit and milk  PM: Cereal, fruit and milk	28 AM: French toast, fruit and milk  PM: Goldfish, fruit and milk	29 AM: Pancake, fruit and milk PM: Yogurt, fruit and milk	30 AM: Waffles, fruit and milk PM: Pretzels, fruit and milk	31 AM: Spooky Yogurt, fruit and milk PM: Teddy Graham, fruit and milk	 

